



## DRILLING FLUID LUBRICATION TECHNOLOGY FIELD PROVEN SOLUTIONS TO DRILLING CHALLENGES



FRICTION REDUCTION   NPT REDUCTION   FILTRATION CONTROL

POWERED BY:



TECHNOLOGY



## THE ULTIMATE GAME CHANGER IN DRILLING TECHNOLOGY

Based in Orange County, California, with operations in the Bakken, Permian, and Marcellus, ProOne, Inc. has developed the most advanced problem solving technology in lubrication today which dramatically reduces heat and friction and has over 50 times the film strength of conventional lubricants. ProOne's game changing drilling technology is the ultimate answer to Rig Efficiency.

ProOne's primary focus is on the oil & gas and industrial markets where its environmentally-friendly line of products takes lubrication to the next level of performance in the most challenging environments.

- **XPL+ Technology has been tested and certified by leading laboratories.**
- **Blue chip corporations use this advanced lubrication technology to offer bottom-line savings.**
- **ProOne's game-changing drilling products have been used in over 1,500 wells by leading oil & gas operators in multiple oilfields, proving to reduce torque, reduce NPT, and save money.**



## XPL+ TECHNOLOGY

XPL+® has a **positively charged molecule structure** with a strong ionic (+) charge which allows it to bond to metal even under extreme heat and pressure, giving lubricants formulated with XPL+ unprecedented film strength and extreme pressure protection.

ProOne Downhole Drilling Fluid Treatment has been responsible for producing extraordinary results in horizontal and vertical drilling operations.

It is biodegradable as defined by stringent international standards, and is also non-toxic to aquatic life.



# ENGINEERED FLUID SOLUTIONS TO DRILLING CHALLENGES

## FRICTION REDUCTION:

ProOne's XPL+® Technology has saved drilling company millions, reducing torque and increasing ROP.

## FIELD PROVEN IN SOLVING DRILLING PROBLEMS:



**HIGH TORQUE & DRAG**



**NPT REDUCTION**



**MINIMIZE  
TWIST OFF RISK**



**LONG HORIZONTALS**



**REDUCE  
DRILL BIT WEAR**



**EXCESSIVE TRIPS**



**TOP DRIVE  
OVERHEATING**



**REDUCE  
MUD MOTOR FAILURE**



**DOGLEGS**



**LOW ROP**



**DEVIATED WELLS**



**STUCK PIPE**

## HPHT FLUID LOSS/ FILTRATION CONTROL:

ProOne's advanced shale stabilizers works to ensure a well balanced weight and density for all types of muds, reducing lost circulation events.

## OXIDATION REDUCTION:

ProOne is compatible with all API corrosion inhibitors.

### HOW IT WORKS

On a bench cross axis friction machine test, bearings are subjected to pressure from a spinning race.

Using a leading water based mud without XPL+®, the bearing sustains severe damage at only 4,000 pounds per square inch of pressure.

With ProOne's exclusive XPL+ Technology, there is minimal damage at 200,000 per square inch of pressure...over 50 times the pressure!

Without XPL+®



4,000psi

With XPL+®



200,000psi



# NITRO<sup>®</sup> DOWNHOLE DRILLING FLUID

POWERED BY:



TECHNOLOGY

## THE ULTIMATE GAME CHANGER IN DRILLING LUBRICATION

Formulated with ProOne's XPL+<sup>®</sup> Technology, **Nitro<sup>®</sup>** is the next evolution in drilling lubrication technology. It is the proven solution for drilling challenges and well cost savings.

This unmatched technology reduces heat and friction under the most extreme conditions and outperforms the competition even at low concentrations, and is compatible with all drilling fluids.

### CHARACTERISTICS:

- XPL+<sup>®</sup> Technology withstands high heat (beyond 500°F+)
- Has an unprecedented film strength of over 200,000psi.
- Begins to work the moment it enters the well

Nitro turns ordinary fluids into **SUPER FLUIDS!** When it comes to performance and maximizing well cost savings, ProOne knows the drill.



ProOne#	Size	Case Pack
51055	55 gallon/ 208L Drum	1
51275	275 gallon/ 1,040L Tote	1

## BENEFITS OF USE

- Reduces torque
- Increases ROP
- Reduce drill bit wear
- Reduce mud motor failure
- Helps reduce trips
- Drills curves up to 50% faster
- Straighter verticals
- Minimizes twist off risk

## DRILLING ISSUES SOLVED

- High torque and drag
- Low ROP
- Excessive trips
- Doglegs
- Top drive overheating
- Reduce wear in mud motors & pumps

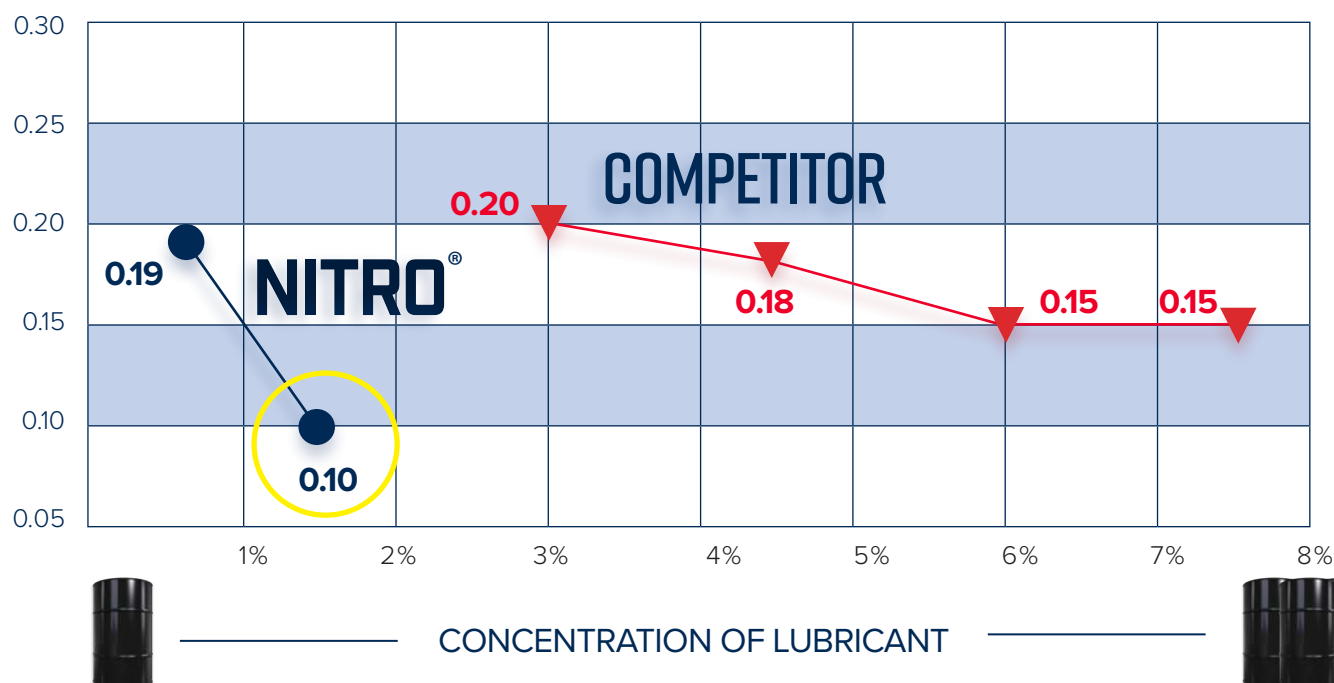
## PRODUCT DATA

Core technology	XPL+ <sup>®</sup>
Base oil	Plant based
Color	Amber
Odor	Mild
Ecological impact	Biodegradable
Solubility in water	Complete
LC-50 test (30,000 ppm to pass)	719,300ppm
Temperature range	(-14°F to 500°F+)
Flash point	400°F (204°C)
Pour point	-14°F
Specific gravity	0.93 @ 60°F (15.6°C)
pH	7.1
VOC	Nil
Stability	Yes
Health	1
Flammability	1
Reactivity	0
Non-hazardous	Class 60
Oil based mud	Compatible
Water-based mud	Compatible
Brine	Compatible

## TESTED & PROVEN

An independent laboratory Dynamic Lubricity test shows that NITRO used at only 1.5% reduces the metal-to-metal coefficient of friction significantly better than a major competitor's product used at 7.5%.

### LEM II Computer Controlled Dynamic Lubricity Testing WTC-14-004685 Outperforms Competition...AT 1.5% vs 7.5%



## ENVIRONMENTALLY FRIENDLY

Nitro not only helps reduce drilling costs but also helps operators reduce environmental risks and cleanup costs.

### MYSIDOPSIS BAHIA 96-HOUR LC50 @ 3%

30,000 ppm is required to pass, industry prefers 150,000ppm. Results: 719,300ppm - **PASSED**

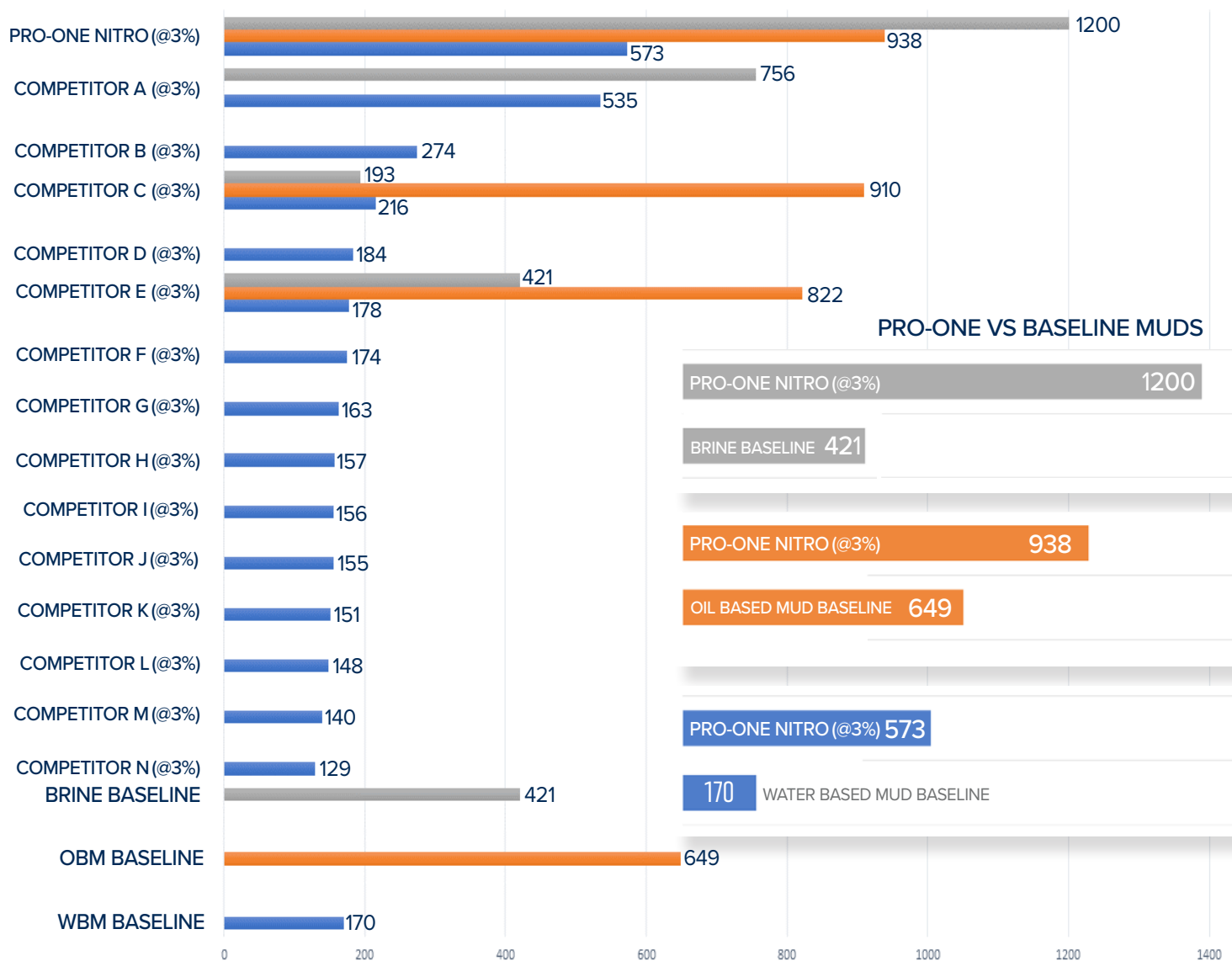
### MYSIDOPSIS BAHIA 96-HOUR LC50 @ 5%

30,000 ppm is required to pass, industry prefers 150,000ppm. Results: 532,300ppm - **PASSED**



# PRO-ONE VS TOP DRILLING FLUIDS

The test was conducted with a mud company who secured 14 competitive lubricants for testing. ProOne went head to head with samples of Water Based, Oil Based, and Brine muds going down the hole today. These tests continue to validate the added benefit and necessity of ProOne XPL+ Technology in rig efficiency and maximum savings.



## METHODOLOGY

MEASURED IN INCH/LBS

Using a Triple Cross Axis Friction Machine similar to what is used in laboratories to test film strength of oils and lubricants, an inch-pound torque wrench is used to apply pressure between a tapered roller bearing and a spinning race. The numbered values (measured in inch-lbs) represent the maximum amount of pressure the fluid is able to withstand at point-to-point contact.

## RESULTS:

- The addition of ProOne Nitro significantly increases lubricity of Brine (421 to 1200), Water-Based Mud (170 to 573), and Oil-Based Mud (649 to 938).
- Water-Based Mud with ProOne Nitro performs almost as well as Oil-Based Mud (573 vs 649)
- ProOne Nitro outperforms all other competitors on all three fluids .. Brine, Water-Based Mud and Oil-Based Mud.

## DRILLING COMBINATION BOOSTS RIG EFFICIENCY

From casing to TD and everything in between, ProOne begins to work the moment it enters the well. Although it can be added at any stage, cost savings begin from spud, exponentially increasing all the way to TD.

### \$500,000 - \$1,000,000 +

- Helps Minimize Twist Off Risk
- Help Avoid Hole Collapse
- TD in High Torque Conditions

### \$100,000 - \$500,000

- Help Save Mud Motors
- Save Drill Bits
- Drill String Repair
- Hard Banding
- Increase ROP
- Helps Save Trips

### \$10,000 - \$100,000

- Help Reduce Pump Wear
- Set Casing Faster
- Slide Liners Faster
- Straighter Verticals
- Reduce Torque

A 3D bar chart with 12 bars of increasing height from left to right. A thick green arrow starts at the base of the first bar and curves upwards, pointing towards the top of the tallest bar. To the right of the tallest bar is a stack of US dollar bills.

Pro-One's time proven lubrication technology ensures dramatic costs savings and higher return



“ProOne has turned ordinary fluids into SUPER FLUIDS ” - Major Operator/ Texas

# DIAMOND DUST

## FILTRATION CONTROL & SECONDARY LUBRICANT

Powered by



Technology

ProOne **DIAMOND DUST** combines **XPL+ Technology** (EP) drilling fluid with the benefits of an asphalt powder. **DIAMOND DUST** is a mud conditioner that enhances inhibition and stabilization with a thin, tough and slick filter cake and helps wells get to TD faster.

This combination provides the best of both worlds making drilling more efficient and more cost-effective.

**DIAMOND DUST** essentially replaces or reduces the need for high-pressure lubricants, shale Inhibitors, shale stabilizers, wallcake enhancers, HPHT fluid loss control additives, and sulfonated asphalts.



50 bags per pallet

## DESCRIPTION:

- Dark Brown to Black Powder.
- Highly dispersible in either water based muds, oil based muds, and brine.

## ADVANTAGES:

- Forms a thin, tough and slick filter cake
- Lubricating properties powered by XPL+ Technology
- Enhances inhibition and stabilization
- Superior fluid loss control
- Compatible with all API corrosion inhibitors
- And it's environmentally friendly!

## MIXING REQUIREMENTS

- Use conventional mud hopper system
- Add 1 sack per 8 barrels of drilling fluid over 4-5 circulations for initial “mud-up”

## MAINTENANCE REQUIREMENTS

- Daily additions of 1 sack per 8 barrels of drilling fluid suggested

ProOne#	Size	Case Pack
58040	40 lb. bag	1

## PRODUCT DATA

Core technology	XPL+®
Appearance	Dry granular
Color	Black
Odor	Sulphur
Solubility in water	30% by weight
Relative density	1.6-1.8
Stability	Yes
Health	1
Flammability	1
Reactivity	0
LC 50 (Flounder) 96-hour	>240mg/L
LC 50 (Algae) 72-hour	>240mg/L

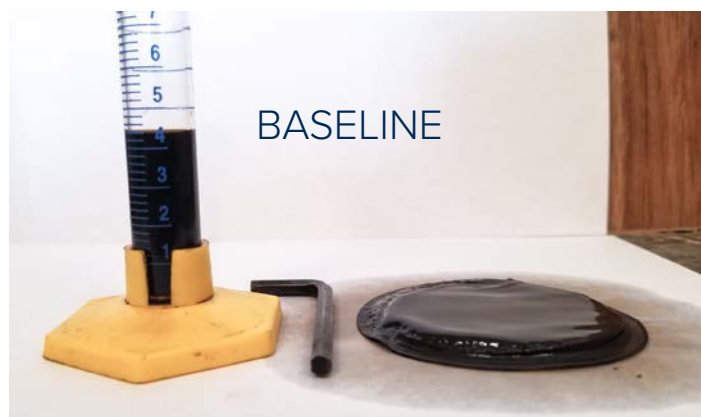
# FILTERCAKE TEST



Test conducted by a major Permian operator clearly showed Diamond Dust's superior performance against a leading competitor...

## BASELINE TEST METHOD

OBM 80/20 with FLR+ at 2.8 lbs. per barrel  
HTHP 30 minutes. Standard 500 psi. differential



Observation: Fluid loss on baseline mud was 8.4 ml. @ 30 minutes and 225°F

## BASELINE WITH DIAMOND DUST

OBM 80/20 with FLR+ at 2.8 lbs. per barrel  
Diamond Dust applied @ 3 lbs. per barrel concentration  
HTHP 30 minutes. Standard 500 psi. differential



Observation: Fluid loss with Diamond Dust was only 4.0 ml. @ 30 minutes/225°F and the filter press was thinner.

## DIAMOND DUST VS MAJOR COMPETITOR

Below: Competitor was also tested under the same conditions.



Observation: Fluid loss with Competitor was 4.4 ml. Filter press is thicker.

"In five decades looking at just about every lubricant product on the market, I have never seen anything like ProOne's XPL+ Technology."

- Major Operator/ Texas



# BIO-STABLE

## DRILLING FLUID CONDITIONER

### ✓ EPA APPROVED FOR OFFSHORE USE ✓ BIODEGRADABLE DRILLING FLUID

ProOne's **BIO-STABLE** Drill Fluid Conditioner is formulated with ProOne's powerful XPL+ lubrication technology. It is designed to reduce heat and friction under the most extreme conditions and has been proven to offer extraordinary results in horizontal and vertical drilling operations.

**BIO-STABLE** can be used in oil-based mud, water-based mud, brine, and is safe for offshore use.



Powered by

Technology



## ADVANTAGES:

- Increases lubricity
- Improves ROP
- Easier steering and sliding
- Less corrosion and wear
- Saves mud pumps and mud motors
- Extends drill bit life

ProOne#	Size	Case Pack
23005	5 gallon/ 18.9L Pail	1
23055	55 gallon/ 208L Drum	1
23275	275 gallon/ 1,040L Tote	1

## DRILLING ISSUES SOLVED

- High torque and drag
- Low ROP
- Excessive trips
- Doglegs & micro doglegs
- Deviated wells
- Top drive overheating
- Going through mud motors & pumps
- Chopped holes
- Spiraled holes

## MIXING REQUIREMENTS

- Introduce at a ratio of 5% to the volume through slug pit concentration, then treat at 1-3% as needed.

## PRODUCT DATA:

Core technology	XPL+®
Base oil	Plant based
Color	Clear amber
Odor	Mild
ph	8.7
Solubility in water	Complete
Relative density	0.97
Temperature range	(-14°F to 500°F+)
Stability	Yes
Health	1
Flammability	1
Reactivity	2
Oil based mud	Compatible
Water-based mud	Compatible
Brine	Compatible
OECD 301B	Ultimate biodegradable
LC-50 Test @3% Pass	464,800ppm (30,000 to pass)
LC-50 Test @5% Pass	239,100ppm (30,000 to pass)
Fathead minnow 96-hour	96-hour =>750 ml/L- Passed



## MAJOR OPERATOR - SHAFTER, CA

A deep, highly deviated well was being drilled with a 12.8 ppg clay-based mud system. High and erratic torque and drag levels were encountered while drilling 6/18 " hole below 12,500', with a well deviation of over 87°. Projected TD was 13,000', and the rig top drive capacity was rated at 9,500 ft.-lbs. with the existing drill pipe.

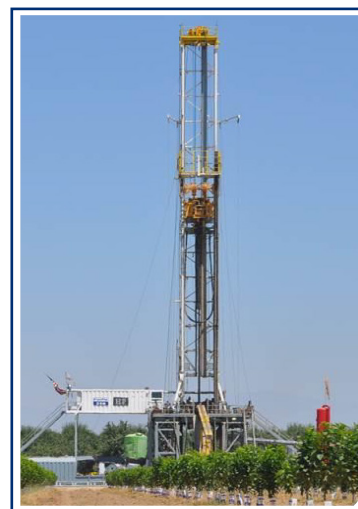
A desire was expressed to attempt to extend the total depth of the well an additional 500', to 13,500'. At the same time, while drilling below 12,500' (about 500' from the initially projected TD) torque and drag in this highly directional well were becoming excessive and wildly variable, potentially limiting the ability of the rig to obtain the desired TD with current conditions.

DATE/TIME	DEPTH	TORQUE (ft.lbs.)	DRAG (#, PUMP OFF)	DRAG (#, PUMP ON)
7/31 - 4:30pm	12,300'	7,200		
7/31 - 6:00pm	12,340'	8,500		
7/31 - 6:30pm	12,400'	8,600	65,000	
7/31 - 7:30pm	12,450'	7,500	74,000	57,000
7/31 - 8:30pm	12,500'	7,700	66,000	28,000
7/31 - 9:30pm	12,550'	7,400 - 7,800		
7/31 - 10:30pm	12,600'	7,800 - 8,800	76,000	
7/31 - 11:00pm	12,650'	8,500 - 8,900	75,000	30,000
7/31 - 12:30am	12,700'	8,000 - 8,500	84,000	
PRO-ONE ADDED				
8/1 - 1:30am	12,750'	7,000		
8/1 - 3:00am	12,800'	7,200 - 8,000	50,000	16,000
8/1 - 4:00am	12,835' (TRIP)	6,000 - 6,600	50,000	14,000
8/2 - 10:00am	12,850'	5,800 - 6,400		
8/2 - 11:15am	12,900'	6,200 - 6,700		
8/2 - 12:30am	12,950'	6,800	50,000	12,000
8/2 - 2:00pm	12,988'	6,800	19,000	9,000

## DIRECT RESULTS

1. ProOne reduced torque from 8,500 ft. lbs. to 6,000 ft. lbs. (a direct reduction of 29%)
2. ProOne reduced drag from 84,000 lbs. to 50,000 lbs (direct reduction of 40%)
3. ProOne reduced circulating drag from 30,000 lbs. to 12,000 lbs. (direct reduction of 60%)

The addition of ProOne DHDF reduced torque and drag immediately and significantly. The enhanced lubricity provided by ProOne DHDF extended rig capacity on this well, supporting the desire to deepen the well and additional 500', and possibly further.





## CASE STUDIES

### MAJOR OPERATOR - CANADIAN, TEXAS

*"We would not have been able to complete this well without ProOne."* - Company Man

#### DIRECT RESULTS:

- Prior to adding ProOne, torque was maxed out at 15,500 ft./lbs.
- ProOne reduced torque 37% from 15,500 ft./lbs. to 9,700 ft./lbs.
- ProOne increased ROP 12% from 22.75 fph to 25.50 fph.
- Reduced drill curve time from 64 to 30 hours
- Operator reached TD with ProOne

2 trip outs @ 60,000 each	\$120,000
2 drill bits @ \$15,500 each	\$31,000
Reduced drill curve time	\$85,000
34 Hours Faster (64 to 30 hours) @ \$2,500 per hour	
ROP @ curve to TD 4,437 ft. @ 25.50 fph	\$52,500
(Increase of ROP 12% Savings 21 hours x \$2,500)	
No hard-banding needed! (Magnets Stayed Clean)	\$12,047

**GROSS SAVINGS** **\$300,547**



### MAJOR OPERATOR - EDDY, NEW MEXICO

*Longest Lateral in New Mexico History at the time. - 19,770 ft.*

*"In 25 years in the oilfield, I have never seen anything like ProOne. We noticed a significant torque reduction and increase in ROP"* - Company Man

#### DIRECT RESULTS:

- Torque reduced by 50% (maxed out from 30,000 ft./lbs. to 15,000 ft./lbs.)
- ROP increased by 28% (from 41 fph to 57.5 fph)



## MAJOR OPERATOR - ALICE, NEW MEXICO

*Longest Lateral for Drilling Company at Location - 20,300 ft. TD*

Company experienced significant lubricity issues on formation and used 18 totes of competitor lubricant from EOC to 13,280 ft. without any results.

### OVERVIEW:

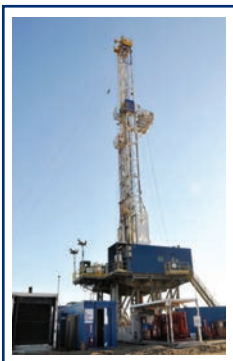
- Nitro introduced at 13,280 ft.
- Applied at 0.75% on first tote
- Added at 2.5gpm of mud pump volume of 610gpm for remainder of 12,290 ft. lateral and reached TD.

### DIRECT RESULTS:

Torque never exceeded 28,000 ft./lbs. (operated between 26k to 28k)  
At EOC (end of curve) rig was right on AFE (authority for expenditure)  
Maintained ROP of 1630 ft. per day putting rig 2 days ahead of schedule  
Well TD'd at 22,300ft.



## MAJOR OPERATOR - LAREDO TEXAS



"Stuck drill string at 11,400ft. Leading spotting fluid was unsuccessful in recovery. After four sweeps of ProOne the string was extracted from the hole...amazing!"

- Company Man

## MAJOR OPERATOR - BAKKEN, ND



"Saved 4 to 6 days at \$90,000 per day over previous 3 holes drilled using a different lube."

- Company Man

## MAJOR OPERATOR - JAL, NEW MEXICO



"Could not set casing for 24 hours. ProOne was used in 2 to 8 barrel sweeps. After the 4th drum, the casing fell to the bottom. ProOne saved us \$250,000 and 4-5 days drilling. "

- Company Man

## MAJOR OPERATOR - PECOS, TEXAS



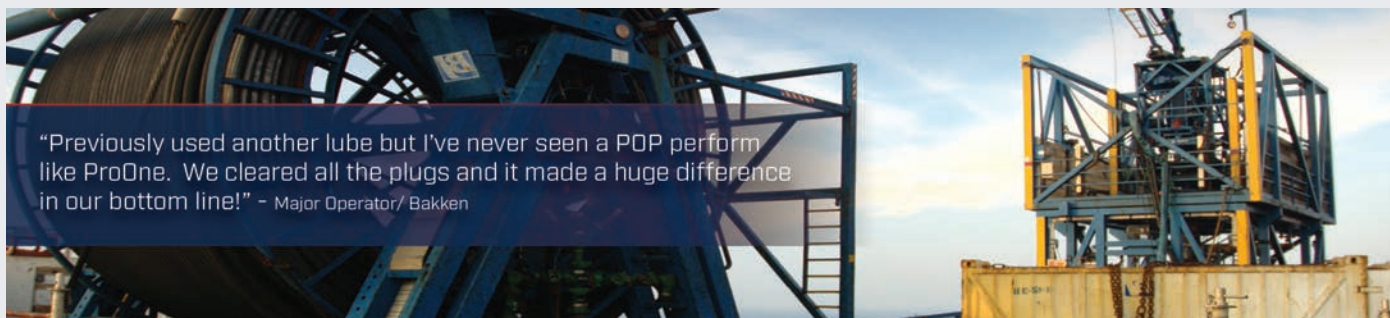
"Reduced torque by 44%, cut the curve in 17 hours vs 22 saving us \$49,583"

- Company Man



CoilPro Pipe on Pipe Treatment is the next evolution in coil tubing lubrication. Powered by ProOne's exclusive XPL+ this positively charged molecule structure bonds to metal, optimizing lubrication. It has a film strength 50 times more powerful than conventional pipe lubricants, withstanding more than 200,000 psi of pressure! This reduces the coefficient of friction between the coil tubing and casing.

In addition CoilPro added to the Pump Liner Wash System will dramatically increase pump performance, extend the life of pistons, liners, swabs and springs by up to 60%!



"Previously used another lube but I've never seen a POP perform like ProOne. We cleared all the plugs and it made a huge difference in our bottom line!" - Major Operator/ Bakken

## ADVANTAGES:

- Attracted to Hot Spots
- Withstands High Heat (beyond 600°F)
- Reduces Pipe on Pipe Friction
- Unprecedented Film Strength (over 200,000psi)
- Water Dispersible
- Helps Increase WOB
- Environmentally Friendly
- Personnel Friendly - Non-Toxic

## TREATMENT:

- Standard Usage - 1 gallon per 1,000 gallons
- Deviated Well - 2 gallons per 1,000 gallons

## BENEFITS OF USE:

- Mill frac-plugs
- Lubricates the entire casing and CT BHA thereby increasing lateral reach

ProOne#	Size	Case Pack
50005	5 gallon/18.9L	1
50275	275 gallon/ 1,040L Tote	1

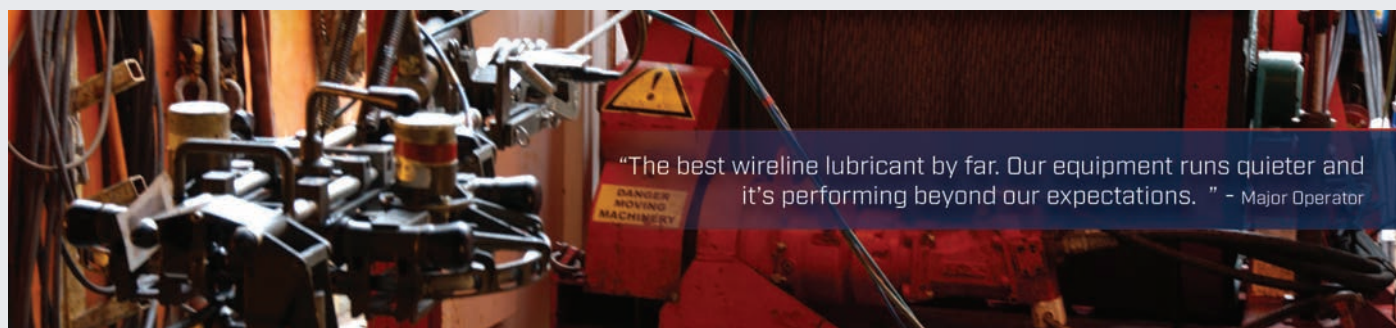
# WireGlide®

Wireline Lubricant



Formulated with XPL+ Technology, ProOne **WireGlide** bonds to metal and has a high load carrying capability (over 200,000psi of pressure) extending wire rope life. It penetrates to the core and reduces friction between individual strands which also insulates wire from EMF, and gives signal and tool protection.

It is ultimately the most superior lubrication technology of its kind able to withstand extreme low and high temperatures. It is resistant against abrasive elements, corrosion/oxidation and helps prevent breakage.



## ADVANTAGES:

- Penetrates and bonds to the wire core
- Heavy load carrying capability
- Extreme high temperature range beyond 500°F
- Extreme low temperature range -40°F
- Water resistant/ displaces moisture
- Superior oxidation and corrosion resistance
- Non-Conductive

## TREATMENT:

- Use as needed

## BENEFITS OF USE:

- Unparalleled protection against seizure and breakage
- Exceptional pumpability
- Maximize equipment life
- Reduces power consumption
- Earth friendly

ProOne#	Size	Case Pack
52035	35 lb./15.9 kg Pail	1
52120	120 lb./54.4 kg Keg	1
52400	400 lb. drum/181.kg	1

# RustPro™

## Rust & Corrosion Inhibitor

ProOne Lubricants offers **Rust Pro™** Rust Inhibitor capable of providing up to 5 years protection in indoor storage and 2-3 years protection outdoors. For carbon steel or any exposed metal or painted surface in high-salt environments. Proven and used by major oil & gas companies for their stack-out programs and pipe protection.

**Rust Pro** is an oil-dispersed, thixotropic, all-purpose rust preventive formulated to provide unsurpassed long-term protection against rust and oxidation. Because of its thixotropic characteristics, **Rust Pro** has the ability to become fluid with agitation enabling the residual film to be self-healing.

### KEY PERFORMANCE BENEFITS:

- Long-term protection for ferrous and nonferrous parts for up to 5 years indoors and 2-3 years outdoors.
- Can be sprayed or brushed for even coating of the surfaces.
- Once on the surface of the part, Rust Pro becomes semi solid reducing drips and runoff.
- Superior clean-ability – it can be easily removed with an alkaline cleaner.

### USE RUST PRO:

- On parts exposed to salt spray environments.
- When parts will be subjected to long term storage or transportation.
- When maximum protection is required against corrosion.

### APPLICATION:

Apply undiluted for maximum protection. The product can be applied by airless spray or dip. Target application film thickness is 2ml. When dipping, the tank should be agitated so that the product becomes fluid and completely coats all surfaces.

- Airless sprayer - 450 sq. ft. per gallon
- Paint roller - 600 sq. ft. per gallon
- Brush - 650 sq. ft. per gallon



UNTREATED

TREATED



ProOne vs The Environment

### PRODUCT DATA

Appearance of fluid	Blue Translucent Semi Solid
Odor	Trace of Petroleum
Viscosity cSt @40°C	Semi Solid
Pour Point	150°F
Specific Gravity	.880 - .992 / 7.5

ProOne#	Size	Case Pack
41001	1 gallon/3.78L	4
41005	5 gallon/18.9L	1
41055	55 gallon/208L	1



# ProFlow

Patent Pending

Production Fluid



## Increases Production - Reduces Wear Decreases Maintenance Costs

ProFlow was developed to solve the problems associated with pump efficiency, production, performance, and untimely wear and failure.

ProOne's XPL+ technology has a polarized strong ionic charge that bonds to the metal surfaces creating a reduction of friction, torque and drag in Rod, Progressive Cavity, and Electronic Submersible pump applications.

## BOTTOM LINE BENEFITS:

### Longevity

- Dramatically reduces rod/ tubing friction with thin film bonded lubrication.
- Increases lifespan of moving parts.
- Reduces the frequency of tubing splits, box cut, HIT, and parting in rod pumps.
- Evidence includes immediate drop in rod load, and change in pump speed or running hours.
- Reduces elastomer failures, sand cut, hysteresis, and de-bonding in PCP's due to ProFlow's outstanding conditioning and lubrication properties.
- Reduces friction in ESP chambers, and inhibits solids build up on pump surface and chambers.

### Production

- Allows for the potential to increase production volume by increasing strokes per minute when inhibited by high drag and friction.
- Best results have been seen in VSDs running slower than 3 strokes per minute due to drag, load, and friction while maintaining a high fluid level.
- Increased speeds in pumps with VSD's
- Same daily production volume in less running hours

### Performance

- Continually adds lubricity to entire system
- Reduce torque, friction & drag
- Increases pump efficiency
- Reduces electrical load on the system
- Reduces flowline pressure
- Can reduce running hours in many instances



## IDEAL FOR:

- Rod Pump Operations
- Progressive Cavity Pumps (PCP's)
- Electrical Submersible Pumps (ESP's)
- A variety of Surface Pump Applications

ProOne#	Size	Case Pack
53275	275 gallon/ 1,040L Tote	1



# RIG MAINTENANCE

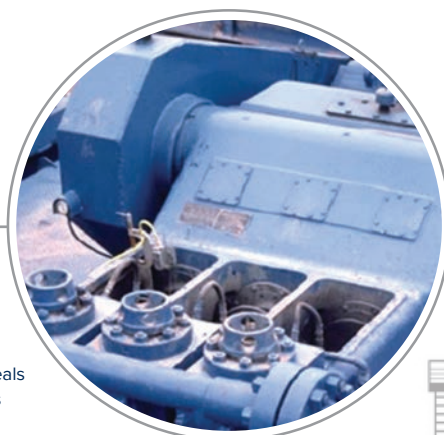
## PROTECT YOUR RIG EQUIPMENT

ProOne's lubrication arsenal extends to all rig level drilling applications. ProOne products are specifically designed to provide the best protection and performance, solve lubrication problems, reduce downtime, and allow equipment to operate safely and efficiently.



### MUD PUMP/ BEARINGS EP-2 Heavy Duty Industrial Grease

- Extreme load carrying capability
- Protects liners, tensioners, pistons, seals, and guides
- Withstands extreme high temperature
- Water Resistant
- All grease zerks
- Chain couplings
- Crown blocks
- Pipe dope - drill pipes/collars
- Pillow blocks
- Sliding control rods
- Rotating brake shafts
- Spline shaft adapter cavities
- Swivel bearings
- Packing sets
- Centrifugal pump seals
- Kelly bushing rollers



### MUD PUMPS/ BULL GEAR OIL Industrial Oil Concentrate

- Dramatically reduces wear on pumps
- Superior load carrying capacity for bull gears and components
- Superior corrosion resistance



### DIESEL GENERATORS/ ENGINE OIL Heavy Duty Oil Stabilizer

- Extreme pressure protection
- Slows oil burning & oil leaks
- Helps restore compression
- Improves performance
- Extends engine life
- Extends oil change intervals 25% to 50%



### DIESEL GENERATORS/ FUEL Fuel Maximizer - Concentrated Fuel Conditioner

- Helps reduce fuel consumption
- Virtually eliminates opacity
- Reduces ash formation
- Adds lubricity to fuels
- Prevents carbon build-up
- Cleans fuel system and injectors
- Improves engine performance



## DRAW WORKS/ WIRE XPL-101 Penetrating Lubricant

- High load carrying capability
- Protects lines from abrasion
- Resists elements such as water, soil, sand, clay, and gravel
- Withstands extreme high and low temperature operations

- |                    |                 |                   |              |
|--------------------|-----------------|-------------------|--------------|
| • Kelly pins       | • Pivot pins    | • Screw jacks     | • Rollers    |
| • Open chains      | • Tongs         | • Brake band pins | • Electrical |
| • Sprocket         | • Mast hinge    | • Nuts & bolts    | • Fasteners  |
| • Pull down chains | • Cylinder pins | • Latches         | • Bearings   |



## CROWNBLOCK/ BEARINGS/ PINS EP-2 Heavy Duty Industrial Grease

- Extreme load carrying capability
- Corrosion resistant
- Withstands extreme high temperature



## TOP DRIVE Hydraulic Treatment

- Lowers friction and operating temperatures
- Superior load carrying capacity for gears and components
- Superior corrosion resistance



## PUMP LINER WASH

- Added @ 8oz intervals twice a day
- Increase pump performance
- Extend life of pistons, liners, swabs, and springs by 60%



Pro-One, Inc. - Corporate Headquarters  
940 South Coast Drive Suite 200  
Costa Mesa, CA 92626  
Phone: (714) 327-0262  
Fax: (949) 535-2135

[www.pro1energy.com](http://www.pro1energy.com)

2019 Pro-One Inc. © All Rights Reserved